



eNdoto Lights up Massachusetts College of Pharmacy and Health Sciences (MCPHS)

COMPANY BACKGROUND

Massachusetts College of Pharmacy and Health Sciences, “MCPHS” University is the oldest institution of higher education in the entire city of Boston and the second-oldest university of pharmacy in the United States. Since the University's founding in 1823, MCPHS University has been on the cutting edge of innovation in healthcare education.

Boasting a student body exceeding 6,500 students on three campuses in New England, and over 900 faculty and staff, in the last decade the university has expanded its \$85 million campus to accommodate this growth through acquisition of properties in Worcester, Boston, and Manchester. The campuses have seen hundreds of millions of dollars in construction and revitalization, which includes research and classrooms, student residences and administrative space.

MCPHS University President Charles F. Monahan, Jr. who has served as President since 1997 is one of the visionaries of the University. Not only has he been instrumental in growing the University by adding cutting edge research and additional programs in many of the Health Science studies, he has also been very involved in the revitalization, construction and expansion of campuses and buildings of MCPHS.

THE CHALLENGE

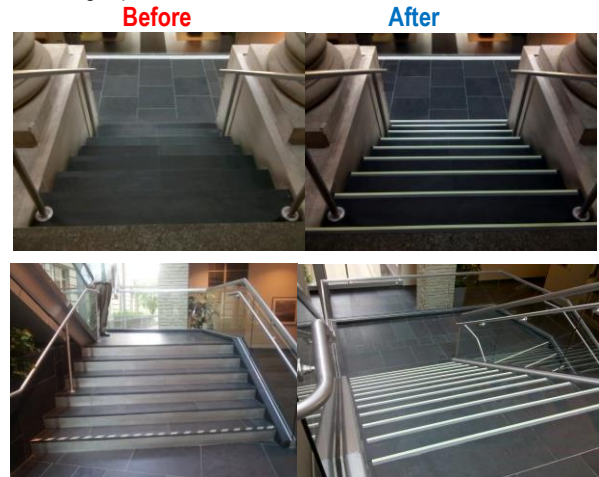
From Boston to Worcester, the \$85 million campus in Worcester, MA included a newly renovated Administrative Wing that served as the heart of the downtown Worcester campus. Dr. Monahan's office is in this wing and he received many compliments from both the faculty and staff of the University as well as the City of Worcester officials. It was recognized as the jewel in the urban downtown neighborhood that was starting to show life again with the bustling of students at the University. But the beautiful, state of the art Administrative wing was experiencing a safety problem.



Many who were using the staircase that lead up to Dr. Monahan's offices were falling, especially as visibility diminished during the twilight hour at the end of the day.

THE SOLUTION

eNdoto's STEPGLOW Photoluminescent Egress Safety Technology provided day contrast and bright egress illumination at night changing the visual dynamics of the stairway. The Photoluminescent accent provides advanced visual awareness reducing trips and falls.



STEPGLOW Photoluminescent 9 Series is extremely sustainable with over 25 years of illumination light driven power that contributes towards securing LEED Points and Credits in the following categories:

- Energy and Atmosphere
- Materials and Resources
- Innovation and Design Exceptional Performance

STEPGLOW safety systems served as the perfect solution for the MCPHS stairway structure, significantly decreasing liability and loss prevention. In addition, eNdoto's Lead Engineers designed a solution that took into consideration solving a safety issue while also keeping the integrity of the newly renovated Administrative Wing décor.

Dr. Charles Monahan states, "Our blue stone stairs in front of our building in Boston were very dangerous—we had many trips and falls. eNdoto installed the STEPGLOW Photoluminescent strips on our stairs. We are very happy with the results, we haven't had any more issues. We had the blue stone stairs at our Worcester campus done as well. I would recommend them highly to anyone experiencing similar safety issues."

About eNdoto: eNdoto prides itself at being the “go-to” source for tailored solutions ensuring traffic and pedestrian safety. Their expertise includes products and systems for roadways and bridges, transit systems, tunnels, waterways and parking lots; for education, cultural and medical facilities; for parks and recreation areas, and for residential and commercial properties, as well as vehicle and equipment lighting. They aim to satisfy the critical and growing demands for green, long-lasting safety and lighting solutions with specially focused, environmentally conscious products and systems. eNdoto Divisions: USReflector * MDS Barriers * GEOVISION * SignalService * STEPGLOW * Phalanx * EveluxUSA*