



**K-71 Flexible Posts**

**K-75 Hand-Carry Post  
with or without LED Flash**

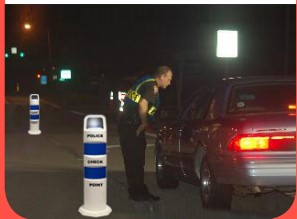


## TRAFFIC SAFETY POSTS

US REFLECTOR posts provide traffic and pedestrian safety solutions for loss prevention management; with constant performance day or night, the flexible marker post “gives” under impact re-erecting to a vertical position. Posts can be customized with matching or contrasting reflective film providing high visibility in all conditions.

### FEATURES

- Flexible durable, long-lasting traffic & pedestrian delineators
- “Gives” under impact, re-erecting to vertical position
- Recessed collars for longer life
- Lightweight, Single-piece design
- Easy installation
- Maintenance free
- Available in all colors with reflective film choices
- K75 Hand-Carry or Flash Post available with illuminated LED's



**FLASH POST**



**MEDIANS**



**PARKING**



**HIGHWAY**



**CITY SCAPE**



## RUGGEDNESS FOR ALL CONDITIONS

Single-piece design, self-erecting post both rugged and flexible. The post withstands pulling, shearing and folding forces. Not affected by inclement weather or temperature differences. Both K-71 and K-75 posts can be customized with reflective film and an LED flasher can be added to the K-75 post.

## TEMPORARY OR PERMANENT

Single point anchoring system eliminates the need for a separate base for quick lane opening and closing. Glue down optional base available

### K-71 POST

Color	Reflective Film	Part #
White	All standard color choices	4A-400-W
Yellow		4A-400-Y
Green		4A-400-G
Blue		4A-400-B
Black		4A-400-BK

### K-75 POST

Color	Reflective Film	Part #	
White	All standard color choices	4A-407-W	
Yellow		4A-407-Y	
Green		4A-407-G	
Blue		Flash Post with LED	4A-407-B
Black			4A-407-BK
Brown	4A-407-BN		

# eNdoto™

US REFLECTOR  
MDS BARRIERS

SIGNAL SERVICE  
PHALANX SAFETY

STEPGLOW  
GEOVISION

“Our expertise includes products and systems for roadways and bridges, transit systems, tunnels, waterways and parking lots; for education, cultural and medical facilities; for parks and recreation areas; for residential and commercial properties; as well as vehicle and equipment lighting.”

eNdoto®

43 Franklin Street \* E. Hartford, CT \*06108

Tel: (860) 289-8033 Fax: (860) 289-8035

www.eNdotoCorp.com