



REFLECTORS

ALL PRISMATIC & CATS EYE



Safety Prismatic Reflectors

US REFLECTOR's high power prismatic and glass "Cats Eye" reflectors provide precision light reflection and superior visibility adapting to all types of safety applications.

Prismatic Reflectors utilize a unique asymmetrical prismatic form that is designed to multiply entering light beams into intense candlelight power. Manufactured with an inner cross frame that strengthens the reflector while protecting the chambers from contaminating elements.

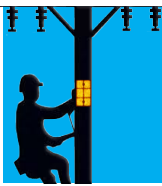
Glass Cats Eye Reflectors are a robust long lasting Glass Bead reflector that are built into an extremely durable semi-flexible support making them virtually indestructible to weather and exposure to corrosive environments.

Reflectors can be mounted on trees, poles, gates, vehicles, buildings, jersey barriers and guard rails. US Reflector provides custom design mounting solutions for all your safety needs.

FEATURES

- 3-Times more reflective power
- Attaches to many applications & structures
- Robust impact resistant Cats Eyes
- Easy installation
- Maintenance free
- Available in many colors & sizes





Guard Rails

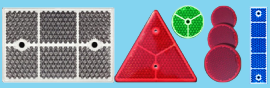
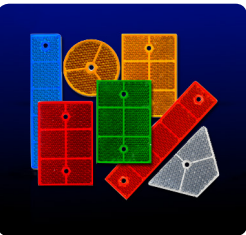
Posts

Poles

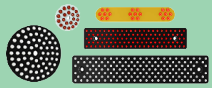
Barriers

SAFETY REFLECTORS

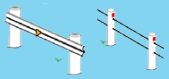
REFLECTORS are available in many sizes and colors allowing scalable safety solutions for virtually any surface. Use for guardrail, concrete barriers, tunnels, walls, commercial & industrial buildings and residential applications.



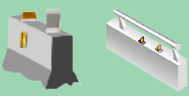
RF SERIES
High Power Prismatic Reflectors



GB SERIES
Glass Bead Reflectors



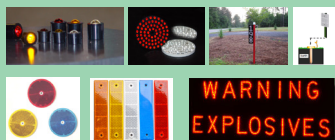
GUARD RAIL
Reflectors



BARRIER
Reflectors



LETTERS & LEGENDS
Reflectors



CREATIVE SOLUTIONS



US REFLECTOR
MDS BARRIERS

SIGNAL SERVICE
PHALANX SAFETY

STEPGLOW
GEOVISION

“Our expertise includes products and systems for roadways and bridges, transit systems, tunnels, waterways and parking lots; for education, cultural and medical facilities; for parks and recreation areas; for residential and commercial properties: as well as vehicle and equipment lighting.”

eNdoto®

43 Franklin Street * E. Hartford, CT *06108

Tel: (860) 289-8033 Fax: (860) 289-8035

www.eNdotoCorp.com